

TECHNICAL DATA SHEET

## **MODSECUR ENVIRONMENTAL MONITORING SYSTEM**



ModSecur<sup>®</sup> EMS – Environmental Monitoring System is a solution for remote monitoring and control of inputs and outputs, it can record data and send various types of alerts.

# MODSECUR ENVIRONMENTAL MONITORING SYSTEM

## SPECIFICATIONS

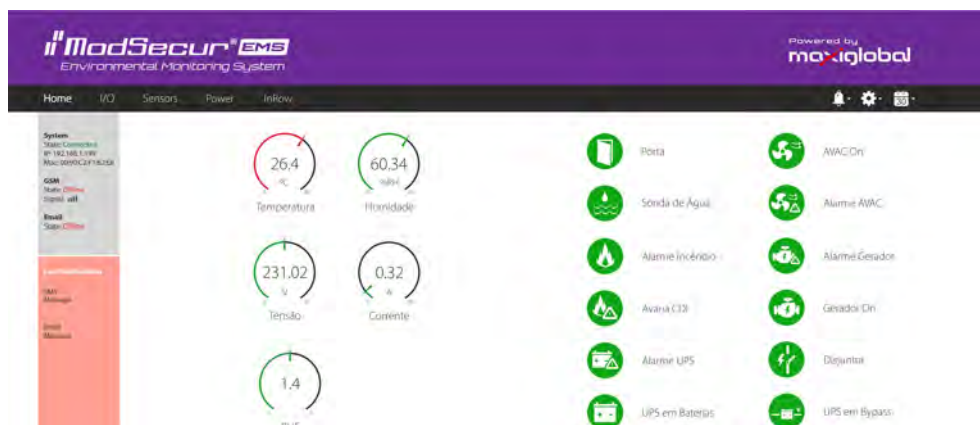
- 1U Rack Mount
- 1.5 and 2mm laminated steel construction
- High strength Epoxy paint
- Color: RAL 9005 Black
- Weight: 2kg
- Width: 435mm
- Depth: 140mm
- Height: 44.45 mm

## HARDWARE FEATURES

- Connection of up to 32 Temperature and Humidity Sensors (Modbus/ASCII)
- 1 Analog Output 0-10V
- 8 Digital Outputs
- 19 Digital Inputs (Protection with Optocouper)
- 1 Ethernet Communication Port
- 1 RS232 port
- 1 RS485 port
- Módulo GSM (Opcional)
- Server/Client Function

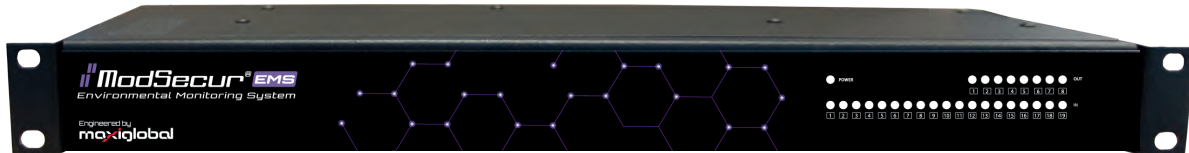
## FIRMWARE FEATURES

- Built-in web server
- User authentication
- Events with direct or programmed reaction
- Remote actuation of digital outputs
- Modbus/RTU communication with external devices
- Easy integration with external system (XML)
- Checking the status of network devices (Watchdog)
- Real-time chart viewing
- Individual parameterization of the I/O status
- Internal memory of 200,000 records
- Protocols: Modbus (RTU and ASCII), SMS and E-Mail (Does not support TLS encryption)

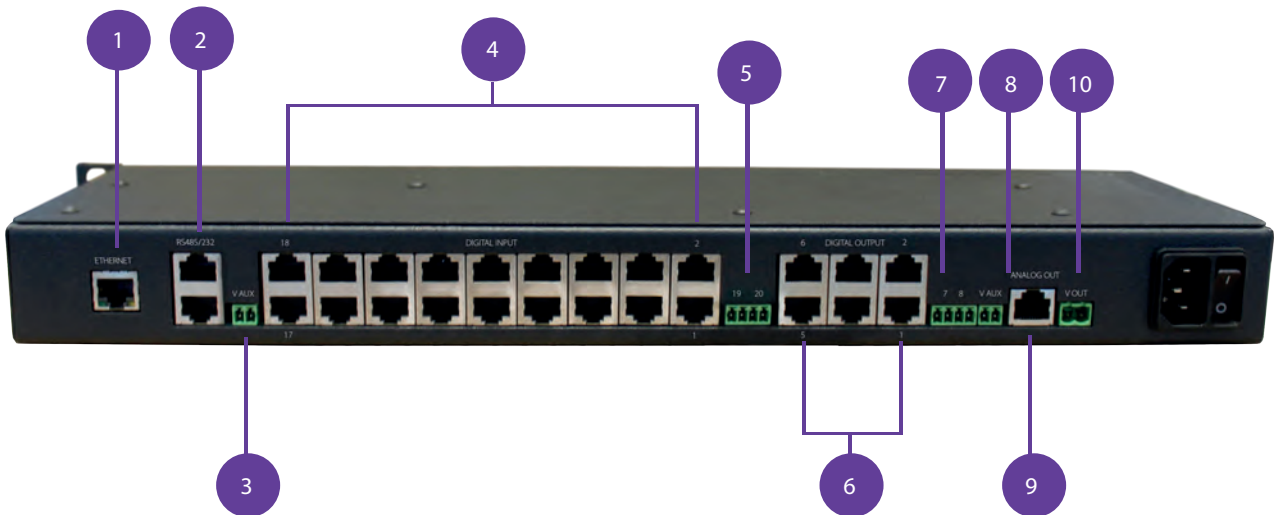


# MODSECUR ENVIRONMENTAL MONITORING SYSTEM

## INSTALLATION



Specific design for rack mounting



1 Ethernet port 10/100 Mb

2 Rs485 RJ45/Rs232 RJ45

3 External voltage input to avoid antenna effect

4 18 digital inputs with RJ45 connection

5 2 Terminal Block digital inputs

6 6 digital outputs with RJ45 connection

7 2 Terminal Block digital outputs

8 12V continuous output

9 Analog output with RJ45 connection from 0 to 10V

10 24V output 24V Terminal Block output

# MODSECUR ENVIRONMENTAL MONITORING SYSTEM

## RS 485 Port Connection

- GND - RJ45 - Pin 7 (Brown-White)
- V++ - RJ45 - Pin 8 (Brown)
- B(-) - RJ45 - Pin 4 (Blue)
- A(+) - RJ45 - Pin 5 (Blue - White)

## RS 232 Port Connection

- GND - RJ45 - Pin 7 (Brown - White)
- TX - RJ45 - Pin 5 (Blue - White)
- RX - RJ45 - Pin 4 (Blue)

## Connection RJ45 Port Digital Input

- +24V - RJ45 - Pin 3 (Green-White)
- 0V - RJ45 - Pin 6 (Green)
- COM - RJ45 - Pin 4 (Blue)
- NO - RJ45 - Pin 5 (Blue - White)

## Connection RJ45 Port Digital Output

- +24V - RJ45 - Pin 2 (Orange)
- 0V - RJ45 - Pin 1 (Orange - White)

## Connection RJ45 Port Analog Output

- +10V - RJ45 - Pin 2 (Orange)
- 0V - RJ45 - Pin 1 (Orange - White)

